

CHUCK

proudly, **UNDERDOG**

QUICK START GUIDE

This is our brand new tube based guitar amplifier: Equipped with DSP, IR loader, AMP simulation, MIDI and USB interface, USB audio and a 25W @4Ω amplifier - a real power pack for your sound!

underdog-audio.com

[instagram.com/underdog_153.3](https://www.instagram.com/underdog_153.3)

If you have any questions or problems, we're happy to help you:
support@underdog-audio.com

YOUR MOST IMPORTANT CONNECTIONS

OUT 1 and 2:

Outputs 1 and 2, each XLR and
6.3 mm jack in parallel

POWER:

Power switch



DC IN:

Power connection
(lockable socket)



GIT IN:

Guitar input

SPEAKER:

Amplifier output
25W @4Ω

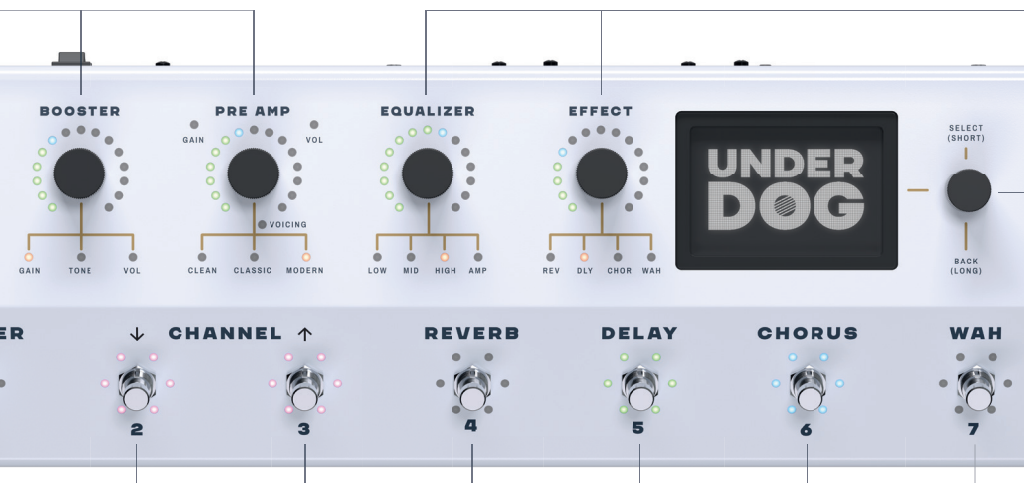
2 Encoder

EQUALIZER

- 🔄 Change LOW, MID, HIGH, AMP
- 👆 Switch between LOW, MID, HIGH, AMP

EFFECT

- 🔄 Change REV, DLY, CHOR, WAH
- 👆 Switch between REV, DLY, CHOR, WAH



1 Encoder for display operation

- 🔄 Select
- 👆 Confirm
- 👆 Back

2 Encoder

BOOSTER

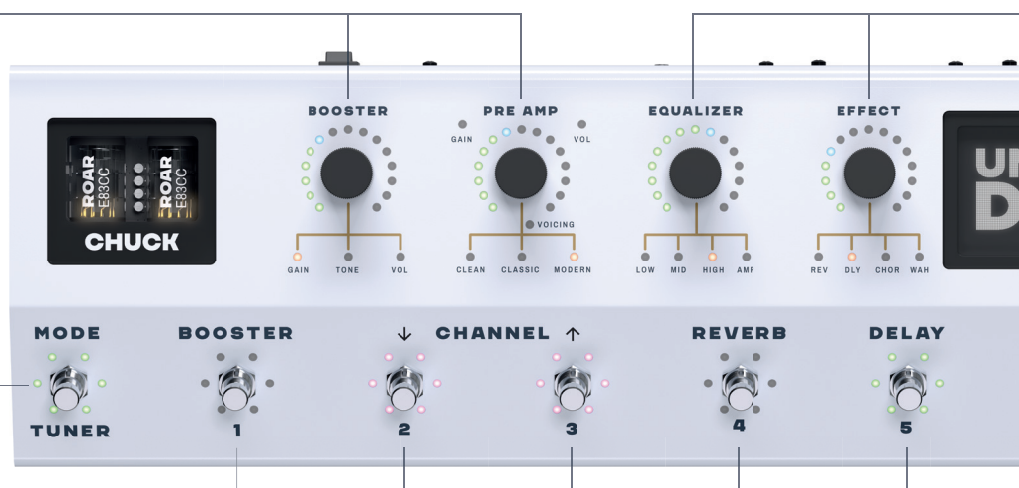
- 🔄 Change GAIN, TONE, VOL
- 👆 Switch between GAIN, TONE, VOL

PRE AMP

- 🔄 Change GAIN, VOL
- 👆 Switch between GAIN, VOL
- 👆 Change VOICING

Foot switch TUNER / MODE

- 👆 Switch between
- Preset Mode • Edit Mode
- 👆 TUNER on/off



7 Mode foot switch

PRESET MODE

- 👆 Choose the desired preset
- 👆 Save the current sound configuration in the selected preset.

EDIT MODE

Switch the BOOSTER on/off. Select the CHANNEL of the PRE-AMPS (CLEAN, CLASSIC, MODERN) and activate the desired effect.

Our legend

- 🔄 Turn
- 👆 Short press
- 👆 Long press

CHUCK'S DISPLAY

CHUCK keeps track of everything: When switched on, CHUCK always starts in the last preset you saved and used - it'll be shown on the display. No matter where you left off it simply continues. The mode remains exactly as you left it.

Two modes for even more flexibility:

Preset Mode

Switch through the presets and get started right away.

Edit Mode

Customize your presets according to your taste.

Even more control in Expert Mode: In both modes, you can fine-tune all parameters for each effect - whether REVERB, DELAY, CHORUS or WAH.

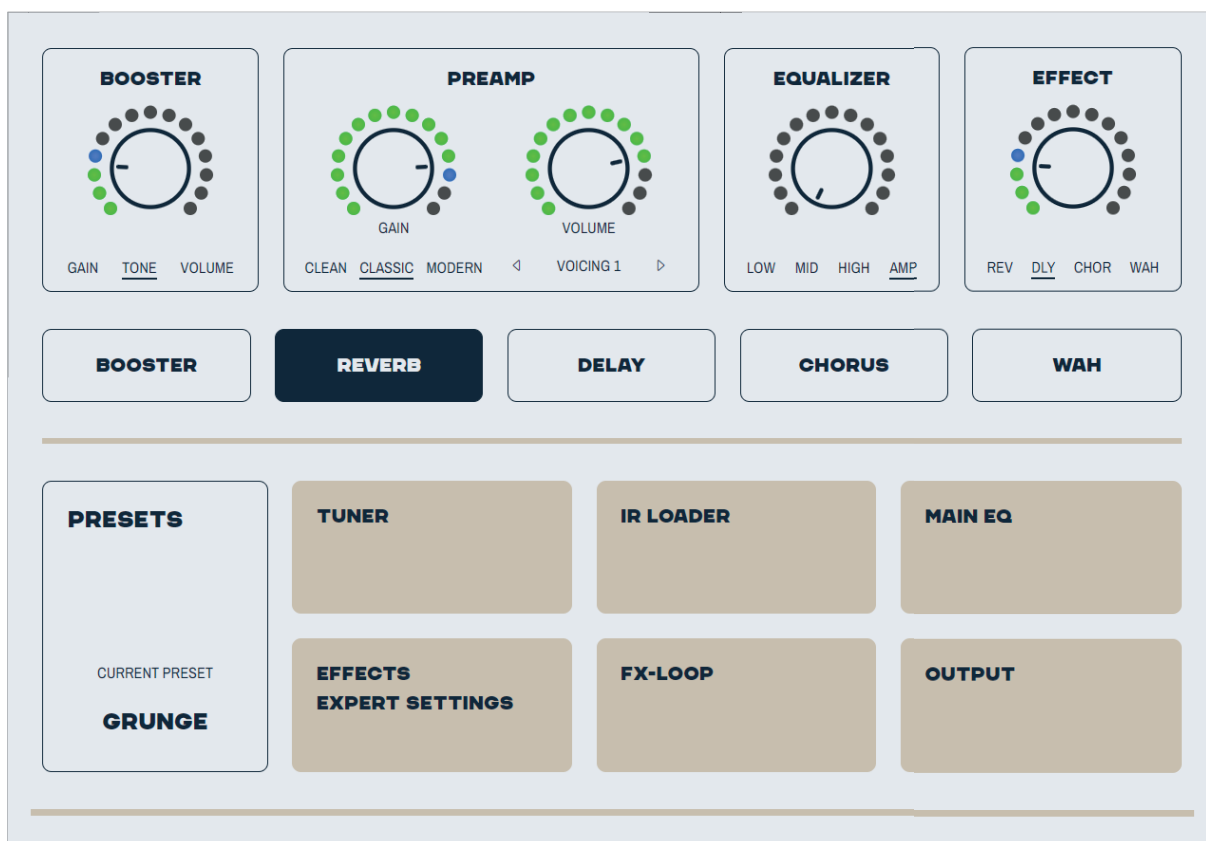


Full control with display and encoder: You have all settings under control via the display menu and the encoder. A pen in the upper right corner indicates unsaved changes - like a reminder that you should save something.

The various pages at a glance:

- **Preset:** Here you determine the display, adjust the name and colors of the selected preset - shows channel and voicing.
- **IR:** Choose your sound! IR-A and IR-B are available and can even be mixed for your individual sound.
- **Main-EQ:** Fine tuning directly in the DSP. All frequencies are intense as you want them to be.
- **Expert Effect Settings:** Activate Expert Mode and dive deep into the parameters for even more creative possibilities.
- **Output Control:** Define your output - with IR loader, AMP simulation and of course the right volume.
- **Menu:** System settings and if necessary a quick factory reset.

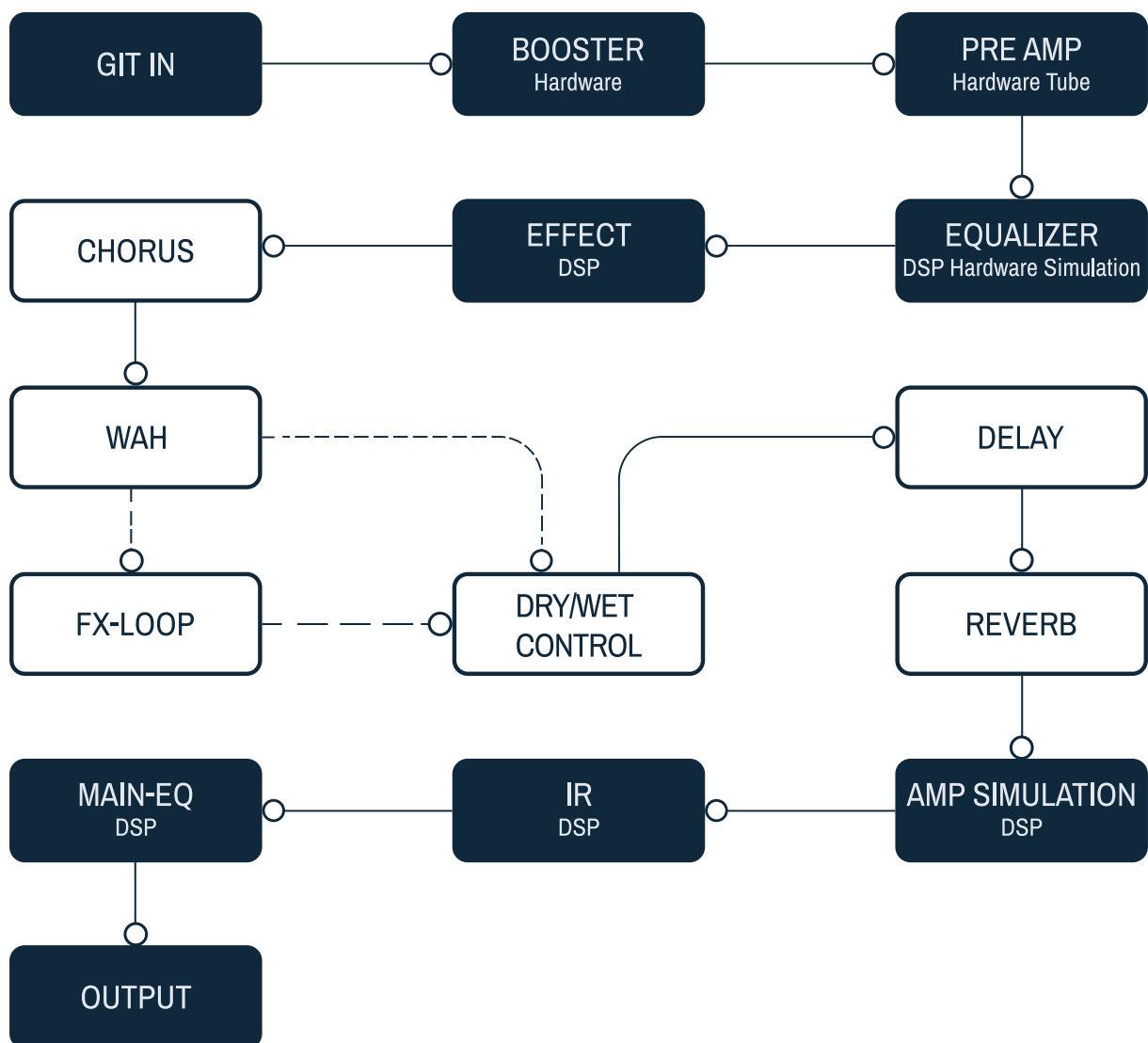
YOUR STUDIO SOFTWARE



Our “STUDIO” software for PC and MAC: Here you can manage all CHUCK settings and easily save your presets outside the device. Full control over your sound - at all times.

You can find the software on our website underdog-audio.com.

THE WAY TO THE PERFECT SIGNAL



USER MANUAL



For all details - scan the QR code: Get the complete user manual directly on your smartphone. Simply scan the QR code and get started!

**WE DO IT WITH
ENTHUSIASM
GREAT PRODUCTS
FOR ENTHUSIASTS.**

